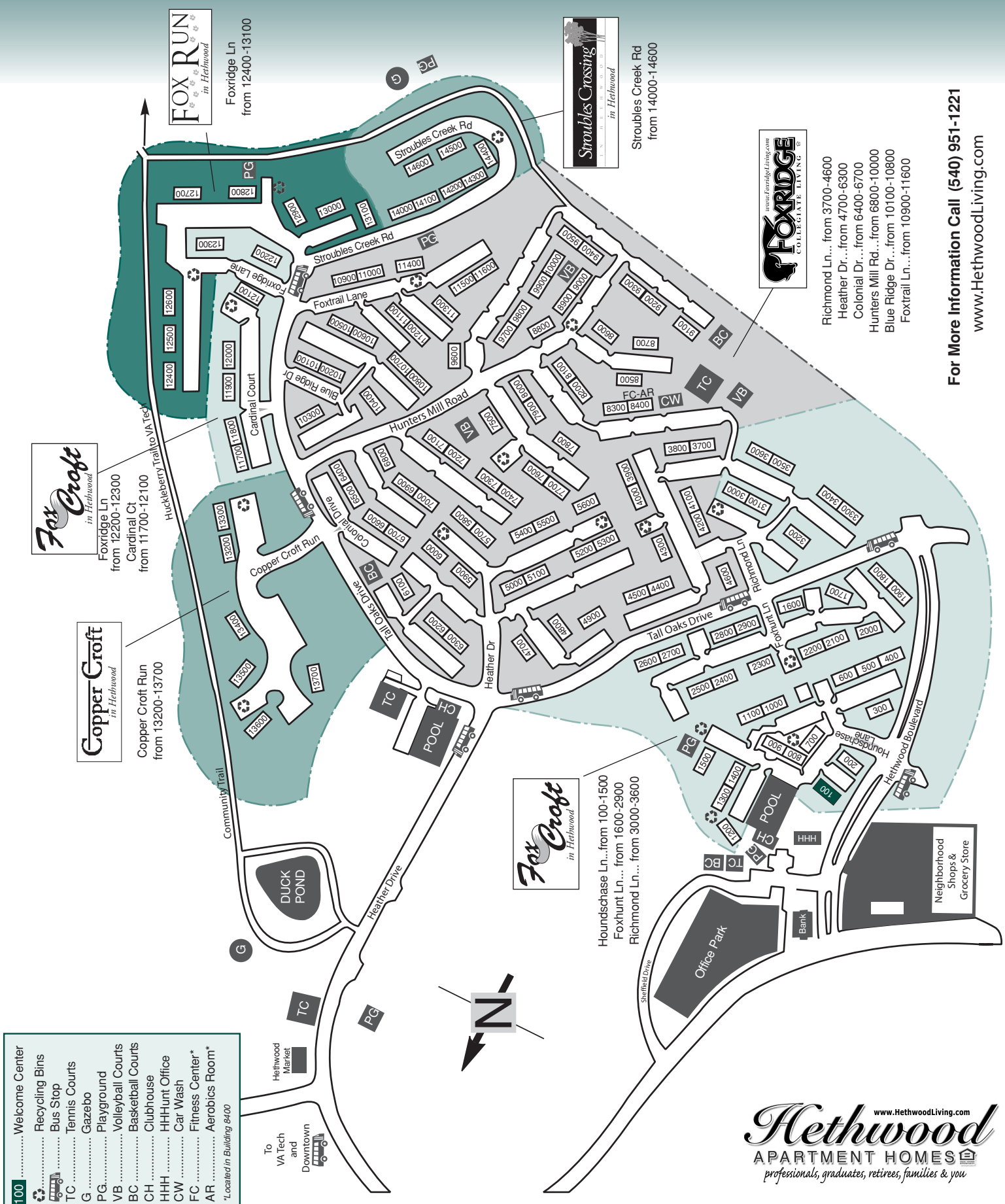


# Community Map



- 100 ..... Welcome Center
  - ..... Recycling Bins
  - ..... Bus Stop
  - TC ..... Tennis Courts
  - G ..... Gazebo
  - PG ..... Playground
  - VB ..... Volleyball Courts
  - BC ..... Basketball Courts
  - CH ..... Clubhouse
  - HH ..... HH Hunt Office
  - CW ..... Car Wash
  - FC ..... Fitness Center\*
  - AR ..... Aerobics Room\*
- \* Located in Building 6400

**Fox Croft**  
in Hethwood

Foxridge Ln  
from 12200-12300  
Cardinal Ct  
from 11700-12100

**Copper Croft**  
in Hethwood

Copper Croft Run  
from 13200-13700

**FOX RUN**  
in Hethwood

Foxridge Ln  
from 12400-13100

**Stroubles Crossing**  
in Hethwood

Stroubles Creek Rd  
from 14000-14600

**FOX RIDGE**  
COLLEGIATE LIVING®

- Richmond Ln... from 3700-4600
- Heather Dr... from 4700-6300
- Colonial Dr... from 6400-6700
- Hunters Mill Rd... from 6800-10000
- Blue Ridge Dr... from 10100-10800
- Foxtrail Ln... from 10900-11600

**For More Information Call (540) 951-1221**  
[www.HethwoodLiving.com](http://www.HethwoodLiving.com)

**Hethwood**  
APARTMENT HOMES  
professionals, graduates, retirees, families & you

# Before You Move

## Numbers To Know:

Welcome Center .....	1-540-951-1221 or 1-800-525-3432
Comcast Communications (Cable) .....	1-888-266-2278
American Electric Power (AEP) .....	1-800-956-4237
Verizon .....	1-800-837-4966
Virginia Tech Information .....	1-540-231-6000
Town of Blacksburg .....	1-540-961-1100
Roanoke Times (Circulation) .....	1-540-382-4905
Public School Information .....	1-540-382-5100
24 Hour Maintenance/Lock Out .....	1-540-951-1223

## Your Hethwood Street Address:

100 Building only .....	750 Hethwood Blvd., apt.#, NW
200-1500 .....	Houndschase Lane, NW (apt. letter)
1600-2900 .....	Foxhunt Lane, NW (apt. letter)
3000-4600 .....	Richmond Lane, NW (apt. letter)
4700-6300 .....	Heather Drive, NW (apt. letter)
6400-6700 .....	Colonial Drive, NW (apt. letter)
6800-10000 .....	Hunters Mill Road, NW (apt. letter)
10100-10800 .....	Blue Ridge Drive, NW (apt. letter)
10900-11600 .....	Foxtrail Lane, NW (apt. letter)
11700-12100 .....	Cardinal Court, NW (apt. letter)
12200-13100 .....	Foxridge Lane, NW (apt. letter)
13200-13700 .....	Copper Croft Run, NW (apt. letter)
14001-14612 .....	Stroubles Creek Road, NW

## Moving Checklist: *(Be sure to notify the following people and agencies approximately two to four weeks before you move.)*

- |                                                                                |                                                                   |
|--------------------------------------------------------------------------------|-------------------------------------------------------------------|
| <input type="checkbox"/> Post Office (for forwarding mail)                     | <input type="checkbox"/> Magazine & newspaper publishers          |
| <input type="checkbox"/> Telephone Company                                     | <input type="checkbox"/> Local suppliers (laundry, etc.)          |
| <input type="checkbox"/> Electric Company (give them your lease starting date) | <input type="checkbox"/> Stores (where you have charge accounts)  |
| <input type="checkbox"/> Cable TV Company                                      | <input type="checkbox"/> Schools                                  |
| <input type="checkbox"/> Insurance Company                                     | <input type="checkbox"/> Employer, doctors, dentists, banks, etc. |
| <input type="checkbox"/> Department of Motor Vehicles                          | <input type="checkbox"/> Friends                                  |

# Neighborhood Features

## Features:

- Comcast High Speed Internet - Discount Pricing\*
- Private Laundry Facilities
- Huge Open Parking Lots - No Pass Required
- 8 Sheltered Blacksburg Transit Bus Stops
- Convenient Path Directly to Virginia Tech
- 8 Tennis Courts (4 are Lighted)
- 5 Playgrounds
- 4 Volleyball Courts
- 3 Basketball Courts
- 2 Sparkling Junior Olympic Size Pools w/Sundeck
- 2 Clubhouses Available for All Occasions - Call for Reservations/Rentals
- Car Wash Area
- Scenic Trails
- Miles of Walk/Bike/Jogging Trails
- Picnic Area with Gazebo and Duck Pond
- Stationary Community Grills
- Fitness Center
- Softball Field
- Aerobics Room
- New River Valley Apartment Council - Distinguished Community Award Winner

\* pricing subject to change

## Activities Calendar:

- Aerobics
- Swimming Lessons
- Pictures with Santa
- Crafts Fair
- Resident Socials
- Senior Citizen Events
- July 4th Pool Cook-out
- Community Yard Sale
- Seasonal Activities for All Ages
- Virginia Tech Basketball Pre-Game Parties
- Virginia Tech Football Tailgate Parties
- Breakfast Activities
- Monday Night NFL Football Parties
- NFL Playoff Parties
- Superbowl Party
- Movie Night
- Egg Hunt
- Halloween Haunt
- BINGO

# *Premier Services & Conveniences*

## **We've built a reputation for the best service.**

Our professional maintenance staff is on-call 24 hours a day. If you have an emergency, our professional staff will respond to your call in a timely manner. The quality of Hethwood and its service team extends beyond your requests to things you don't even have to ask for: such as keeping walks clear of snow, maintaining beautiful landscapes and resident satisfaction.

Inside and out, the quality of Hethwood communities is obvious. Our award winning service teams are dedicated to keeping your community beautiful and comfortable, making this a place you're proud to call home.

### **Services and More:**

- Superior Round-the-clock Maintenance Service
- 24-Hour Lock-out Service
- Community Newsletter- delivered to your door monthly
- Responsive On-site Management Team
- Neighborhood Shopping Center within Walking Distance
- Neighborhood Banking Locations
- Courtesy Seasonal Carpet Cleaning
- Neighborhood Watch Meetings
- Full Service Lawn Care
- Snow Removal
- Blacksburg Transit Service
- Notary Service
- Preventive Maintenance

# About Hethwood Communities

## An Outstanding Location. A Perfect Choice.

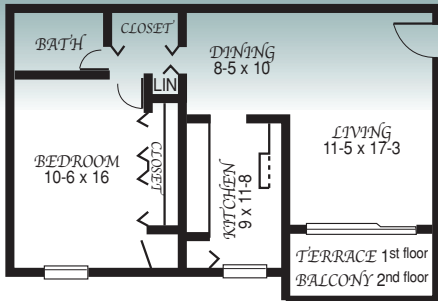
Nestled in the midst of the Blue Ridge Mountains, Hethwood Communities are designed for your lifestyle. Located in the prestigious Hethwood master planned community, our spacious apartment homes are the perfect choice for the family, professional, retiree, graduate student and you!

Conveniently located off Prices Fork Road, just a half mile from US 460, two miles from the Virginia Tech campus, and walking distance to Kipps Elementary and Blacksburg High Schools. Catch the Blacksburg Transit at a stop just steps away from your apartment home. Add in neighborhood shopping and banking locations in the community and you have the perfect location!

Enjoy all the changing seasons in southwest Virginia with a variety of outdoor amenities. As a resident, you'll enjoy two beautiful clubhouses, sparkling swimming pools, tennis courts, playgrounds, basketball courts, miles of paved trails, acres of lawns and scenery, and a variety of monthly social events.

Choose from 1, 2, or 3, bedroom homes. Need more space? Two sizes of optional dens are available. Residents enjoy indoor/outdoor living with a private balcony or patio. Apartment home options include full-size washers and dryers, inviting sunrooms, cozy gas log fire places, scenic views, and convenient furnished apartment homes.

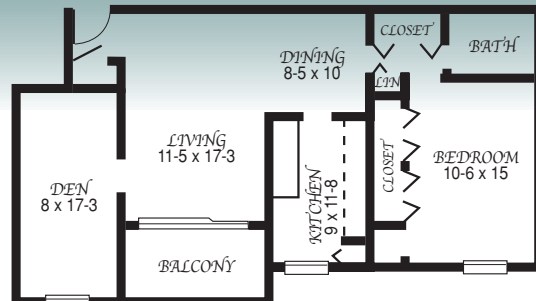
Hethwood Communities offer unparalleled value with an incredible apartment home including heat, water, garbage collection and sewage disposal in one value price monthly. Residents in Hethwood Communities see the savings add up year after year! We take special care in helping you find the perfect apartment home. Our team of professionals is here to serve you!



## 1 Bedroom

725 sq ft

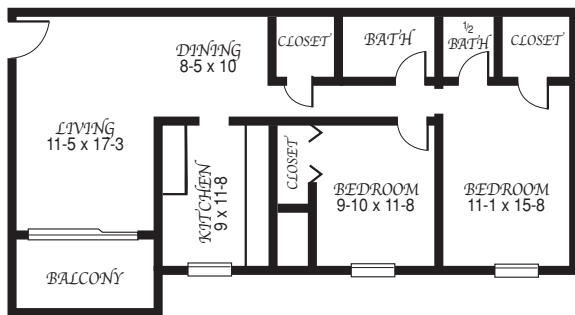
Maximum # of occupants: 2 persons



## 1 Bedroom with Den

863 sq ft

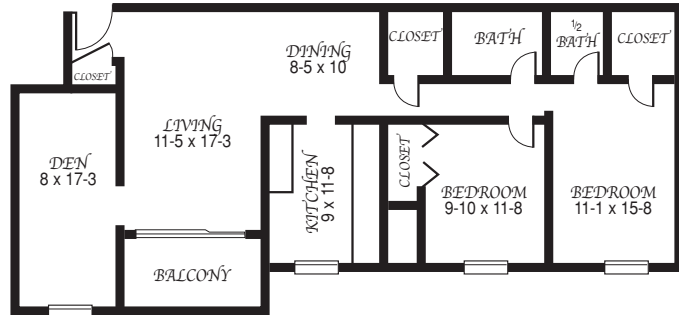
Maximum # of occupants: 2 persons



## 2 Bedroom

930 sq ft

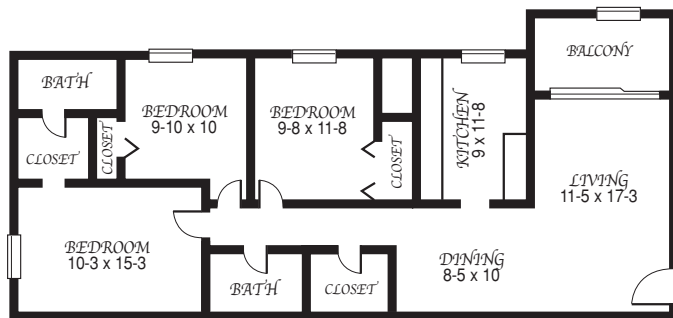
Maximum # of occupants: 4 persons



## 2 Bedroom with Den

1,068 sq ft

Maximum # of occupants: 4 persons

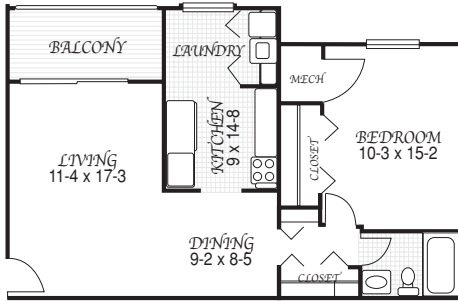


## 3 Bedroom

1,075 sq ft

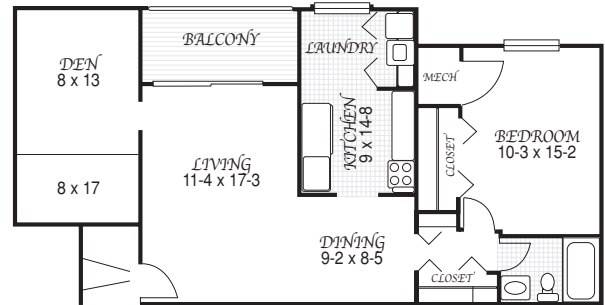
Maximum # of occupants: 6 persons

- Rental rates include money saving gas heat, gas to heat water and trash removal.
- Private laundry facilities in the 1st floor of every building
- Appliance features- full size refrigerator, electric range, dishwasher, and in-sink garbage disposal
- Scenic view from your balcony or patio for an additional monthly fee
- Custom Apartment Upgrades include contrasting color accent walls and other decorative features for an additional monthly fee
- Washer and dryer hook-up options for an additional monthly fee (2 bedroom - stackable connection option, 3 bedroom - side by side connection option)
- Optional furniture and corporate packages available



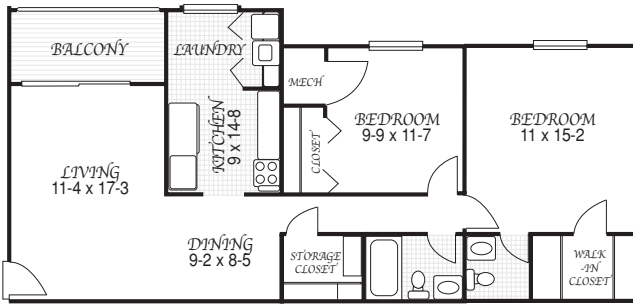
## 1 Bedroom

693 sq ft  
Maximum # of occupants: 2 persons



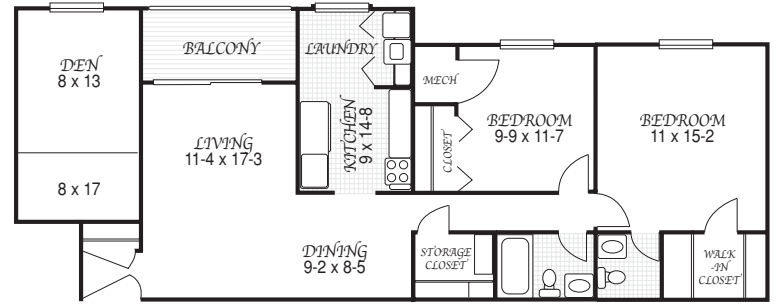
## 1 Bedroom with Den

797 sq ft with small den • 829 with large den  
Maximum # of occupants: 2 persons



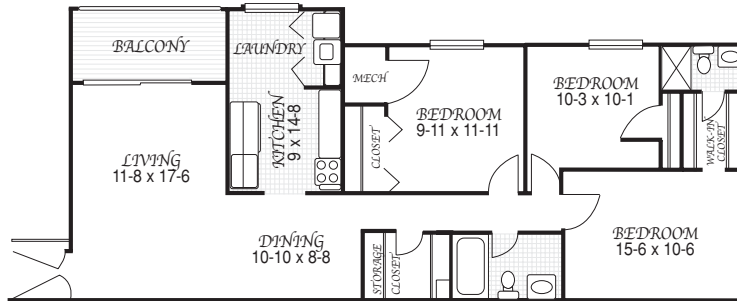
## 2 Bedroom

921 sq ft  
Maximum # of occupants: 4 persons



## 2 Bedroom with Den

1025 sq ft with small den • 1057 with large den  
Maximum # of occupants: 4 persons

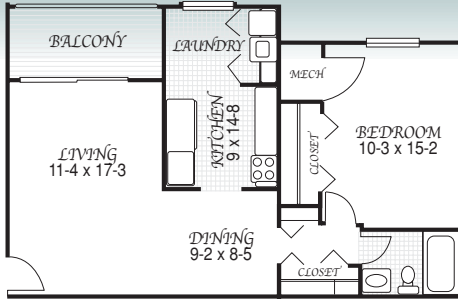


## 3 Bedroom

1008 sq ft  
Maximum # of occupants: 6 persons

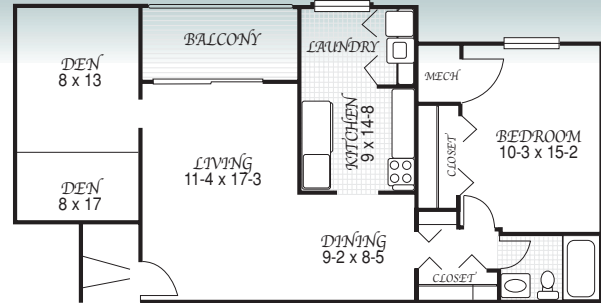
- Rental rates include money saving gas heat and trash removal.
- Optional sunroom floor plan- for an additional monthly fee (sunroom increases interior square footage where the balcony is located)
- Scenic view from your balcony or patio for an additional monthly fee
- Appliance features- full size side by side washer and dryer, range, refrigerator, dishwasher, in-sink garbage disposal and microwave
- Sliding patio doors leading to private balcony or patio (excludes sunroom floor plans)
- Optional furniture and corporate packages available

# Copper Croft *in Hethwood*



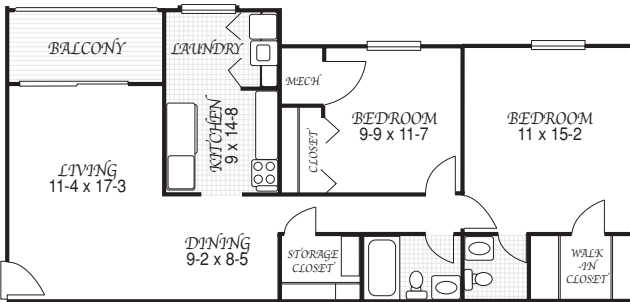
## 1 Bedroom

693 sq ft  
Maximum # of occupants: 2 persons



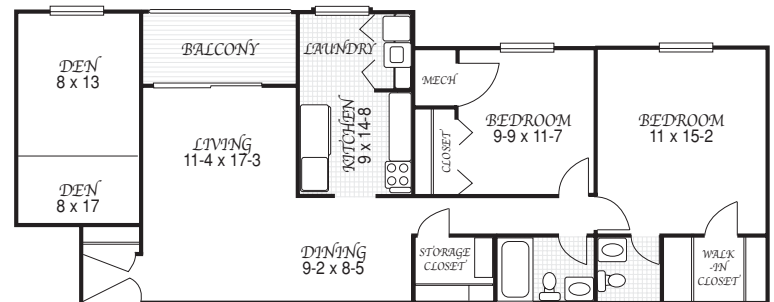
## 1 Bedroom with Den

797 sq ft with small den • 829 with large den  
Maximum # of occupants: 2 persons



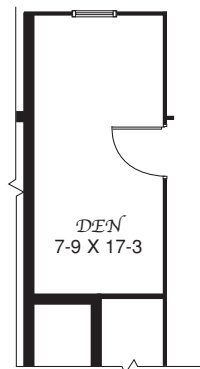
## 2 Bedroom

921 sq ft  
Maximum # of occupants: 4 persons

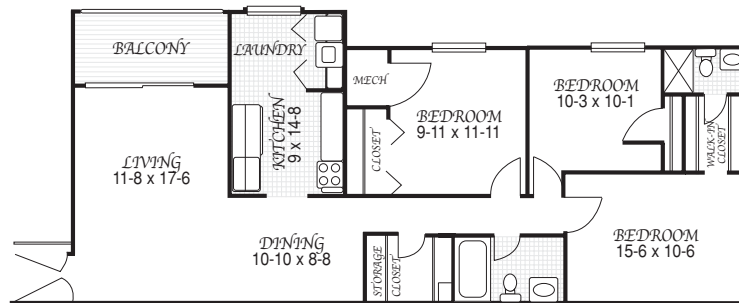


## 2 Bedroom with Den

1025 sq ft with small den • 1057 with large den  
Maximum # of occupants: 4 persons

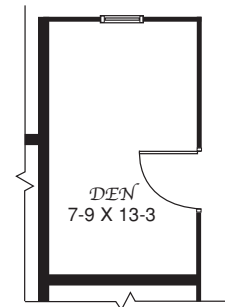


DEN OPTION  
SECOND FLOOR PLAN



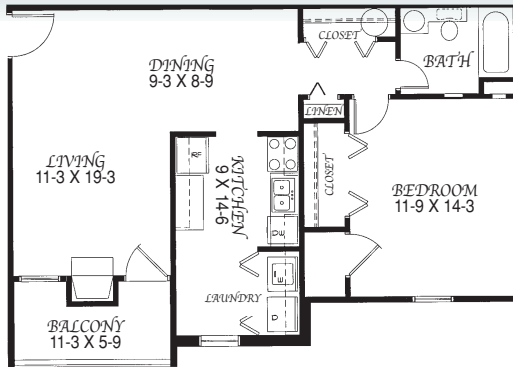
## 3 Bedroom

1008 sq ft without den • 1112 with small den • 1144 with large den  
Maximum # of occupants: 6 persons



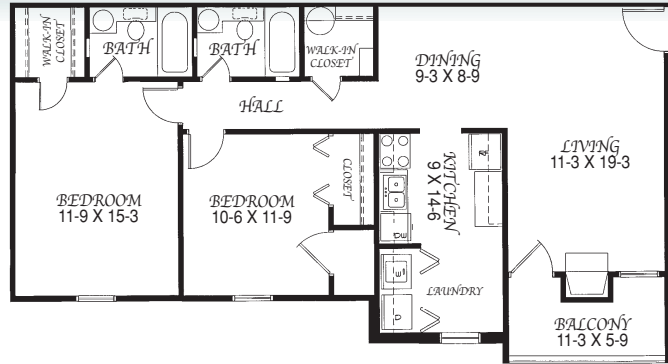
DEN OPTION  
FIRST FLOOR PLAN

- Rental rates include money saving gas heat and trash removal.
- Optional sunroom floor plan- for an additional monthly fee (sunroom increases interior square footage where the balcony is located)
- Scenic view from your balcony or patio for an additional monthly fee
- Appliance features- full size side by side washer and dryer, electric range, refrigerator with icemaker, dishwasher, and in-sink garbage disposal
- Sliding patio doors leading to private balcony or patio (excludes sunroom floor plans)
- Optional furniture and corporate packages available



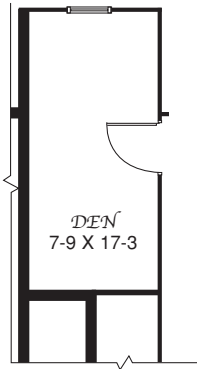
## Creekside

approx. 759 sq. ft.  
1 Bedroom, 1 Bath with optional den  
Maximum # of occupants: 2 persons

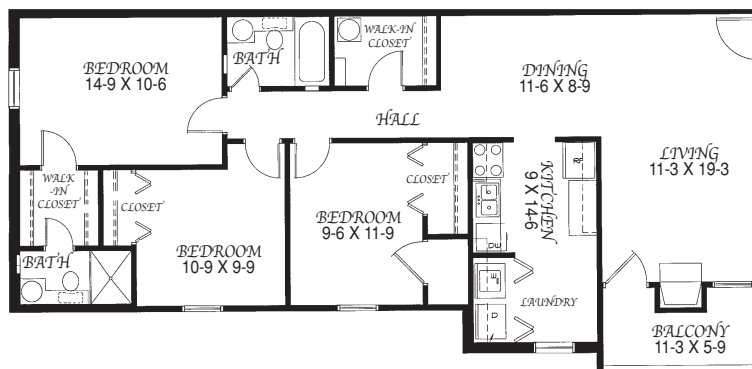


## Oakbrook

approx. 982 sq. ft.  
2 Bedrooms, 2 Baths with optional den  
Maximum # of occupants: 4 persons

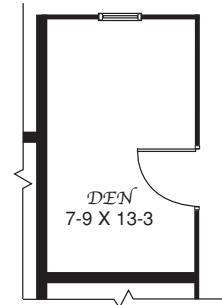


DEN OPTION  
SECOND FLOOR PLAN



## Meadowview

approx. 1121 sq. ft.  
3 Bedrooms, 2 Baths with optional den  
Maximum # of occupants: 6 persons




DEN OPTION  
FIRST FLOOR PLAN

- Rental rates include money saving gas heat and trash removal.
- Optional sunroom floor plan- for an additional monthly fee (sunroom increases interior square footage where the balcony is located)
- Scenic view from your balcony or patio for an additional monthly fee
- Cozy gas log fireplace (excludes sunroom floor plans)
- Appliance features- full size side by side washer and dryer, electric range, refrigerator, dishwasher, in-sink garbage disposal, microwave, and icemaker
- French door leading to private balcony or patio (excludes sunroom floor plans)
- Optional furniture and corporate packages available

# Your Savings

## Compare Your Savings at Hethwood Communities

 <small>www.HethwoodLiving.com</small> <small>professionals, graduates, retirees, families &amp; you</small>		Apartment Home Type _____
Rental Rate**	\$	
Square Footage: _____ sq.ft.		Compare the size of apartments!
Save time with a short commute _____		Measure the distance to local schools
Heat	\$0	annual savings of \$300-\$600*
Electricity	\$	
Water & Sewage	\$20-\$59	price varies by size no charge for connection or deposit
Gas to Heat Water in FoxCroft in Hethwood	\$0	annual savings of \$180*
Garbage & Recycling	\$0	annual savings of \$100*
Parking	\$0	no pass required / no towing hassles!
24 Hour Maintenance	\$0	
Internet Service	\$35.34**	Comcast high speed - special rate for our residents ONLY
Weight Room & Fitness Center	\$0	
Other:	\$	
<b>Total Monthly Cost:</b>	\$	
Refurbishing/ Move-out Fee	\$0	no hidden move-out costs!
Application Fee	\$35	qualification fee / criminal background checks on all residents and occupants
Standard Security Deposit	\$300-\$500	or \$200 per roommate
Utility Connection/ Set-up Fees	\$	
Other:	\$	
<b>Total Fees and Deposits Cost:</b>	\$	

Comparison Rental Unit	Comparison Rental Unit
\$	\$
sq. ft.	sq. ft.
\$	\$
\$	\$
\$	\$
\$	\$
\$	\$
\$	\$
\$	\$
\$	\$
\$	\$
\$	\$
\$	\$
\$	\$
\$	\$
\$	\$
\$	\$
\$	\$
\$	\$
\$	\$

\*Total Utility Savings are estimates based on a 2 bedroom FoxCroft apartment home. Save even more on larger size apartment homes!

\*\*Rates subject to change